



CANADA FOUNDATION FOR INNOVATION

2027 Innovation Fund Information Session

June 2026

INNOVATION

Canada Foundation
for Innovation

Fondation canadienne
pour l'innovation



Housekeeping

- Use the Q&A function to submit questions during the presentation
- Dedicated Q&A session at the end
- Presentation is recorded
- Slides, recording & FAQ will be shared

Agenda

Objectives and budget

Timeline

Key features

Application process

Review process

CANADA FOUNDATION FOR INNOVATION

Objectives and budget

Competition objectives & budget

- Strengthen researchers' ability to excel and compete internationally
- Build sustainable research capacity
- Generate relevant and impactful benefits for Canadians

\$325 million

Research infrastructure funding
(CFI provides 40%)

+

\$97.5 million

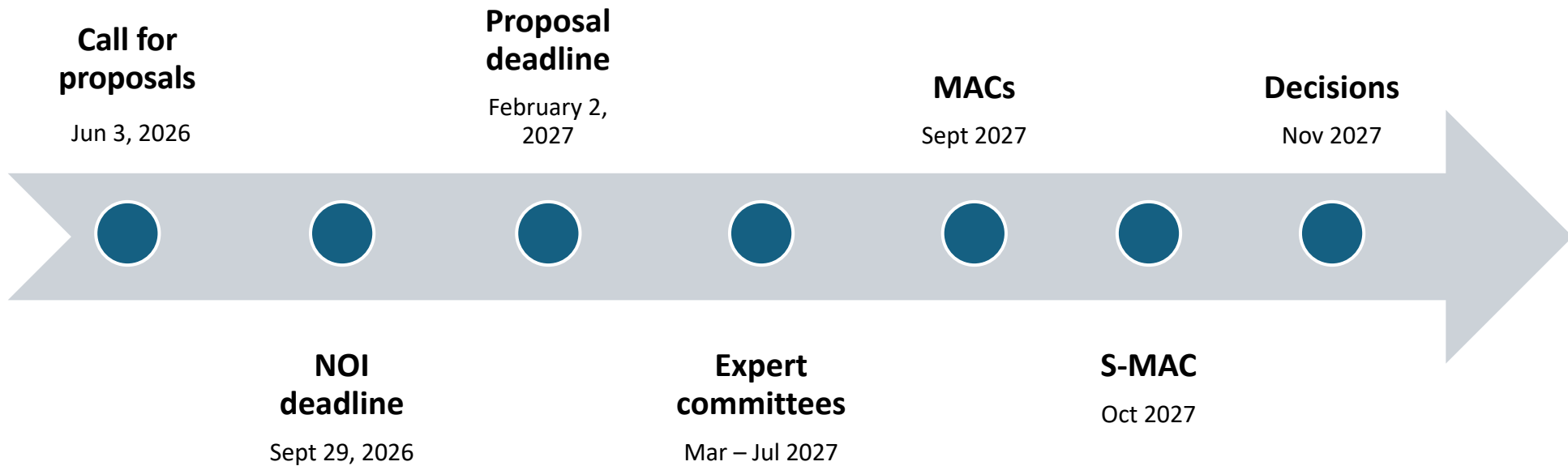
Operating & maintenance costs
(30% of the CFI award
through the IOF)



CANADA FOUNDATION FOR INNOVATION

Timeline

Important dates



CANADA FOUNDATION FOR INNOVATION

Key features

Key features (1/5)

STREAM
1



Leading edge of exploration and knowledge generation (open)

Open to proposals from all disciplines

STREAM
2



Leading edge of exploration and knowledge generation in the SSHAs

Proposals must have their primary fields of research in SSHAs.

STREAM
3

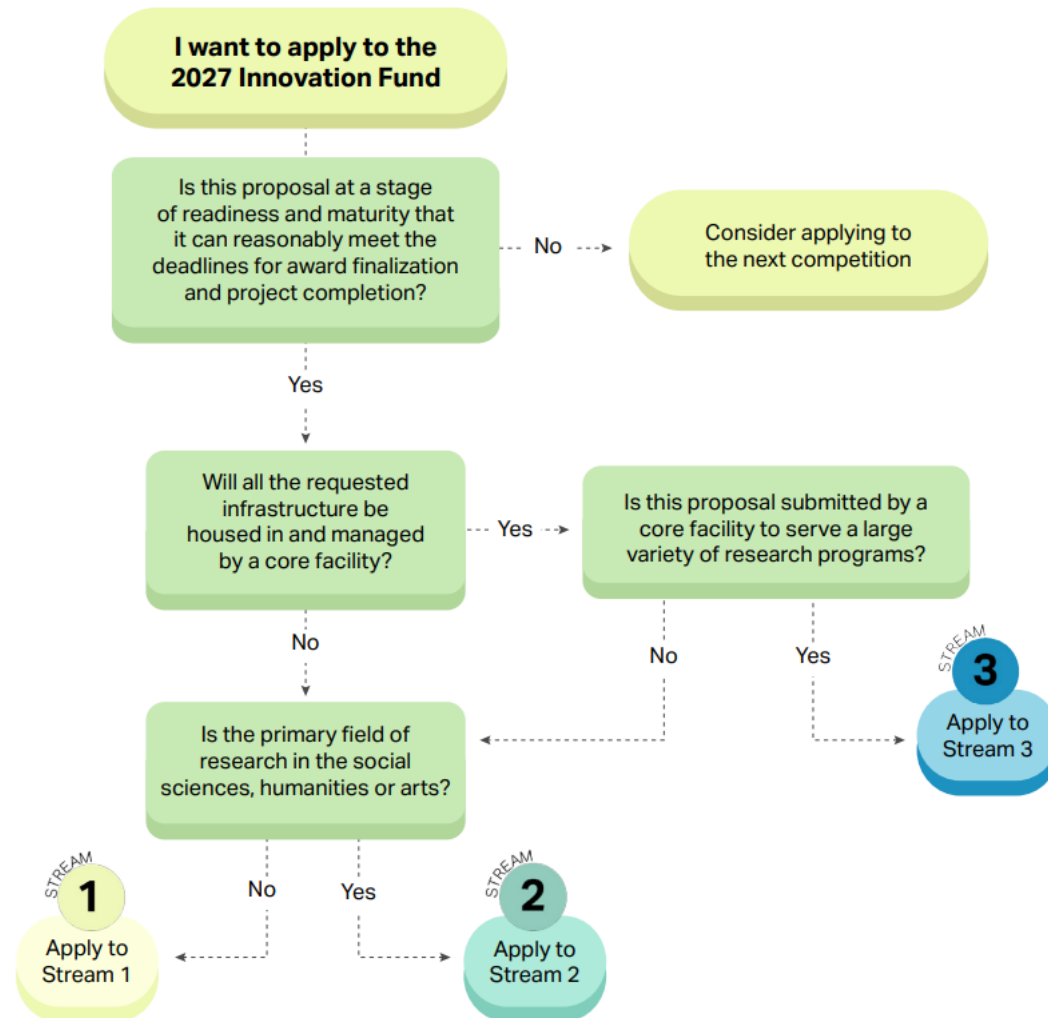


Creation, renewal and upgrade of core facilities

All requested infrastructure must be housed in and managed by a core facility.

No predetermined distribution of funding among the streams

To which stream should I apply?



What is a core facility?

A core facility provides access to the following, which are generally too expensive, complex or specialized for researchers to cost-effectively provide and sustain themselves:

- State-of-the-art research services and analyses
- Instruments and technology
- Expertise
- Training and education.

Also, a core facility:

- Is broadly available to many researchers to conduct their research activities, irrespective of their administrative affiliation and with no requirement for collaboration or co-authorship
- Has dedicated equipment and serves a large variety of research programs
- Is formally recognized as a core facility and supported by the research institution where it is located
- Has a clearly defined governance and management structure
- Has a sound management plan reflective of its mandate, breadth and complexity
- Has dedicated management involving individuals with the technical and subject matter expertise necessary to oversee all aspects of the facility.

A core facility focused predominantly on computing infrastructure is not eligible.

What is a core facility?

Some Q&A's

1. Q: Can a core facility be distributed among multiple sites and/or institutions?
A: Yes.
2. Q: Can an MSI facility submit a Stream 3 proposal?
A: Yes. However, O&M personnel costs cannot be requested.
3. Q: Can I request computing infrastructure as part of a Stream 3 proposal?
A: Yes, as ancillary infrastructure.
4. Q: Can a core facility director be one of the team leaders?
A: Yes.
5. Q: Are departmental core facilities eligible?
A: Core facilities must be formally recognized by the institution.

Key features (2/5)

- It is expected that projects will be finalized within **9 months** of funding decisions, and the final financial report will be submitted within a **reasonable time frame**:

CFI contribution to a project	Deadline to submit final financial report
≤ \$1 million	November 2031
> \$1 million and ≤ \$4 million	November 2032
> \$4 million	November 2034

- CFI contribution to the project must be greater than **\$400,000** for proposals to be eligible for this competition.



Key features (3/5)

Examples of eligible personnel cost

- All streams: ongoing personnel support for databases
- SSHA: salaries of personnel involved in the design and development of partnerships and community networks
- Stream 3: salary costs for scientific and technical personnel involved in the operation and management of a core facility

Eligibility period

Expenditures and in-kind contributions must take place between November 1st 2025 and the deadline to submit the final financial report.

Key features (4/5)

Defence and dual-use technologies:

- [Canada's Defence Industrial Strategy](#)
- Leveraging partnerships with federal initiatives (e.g., [BOREALIS](#), [DISH](#), [DIANA](#)) in the pursuit of sovereign capability development
- Collaboration with the Department of National Defence:
 - Sharing of NOIs, proposals and expert committee reports
 - Expert committee meetings (observers)
 - Review process and assessment criteria remain the same

Key features (5/5)

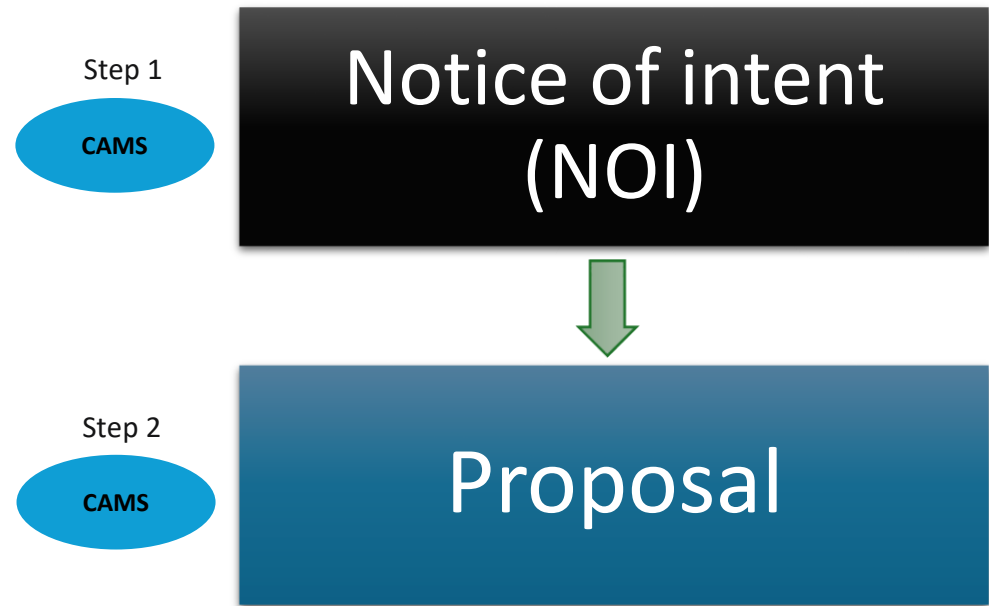
Indigenous research

- Research excellence includes strengthening Indigenous self-determination, leadership and research capacity.
- Indigenous research is conducted by, with or grounded in First Nations, Métis or Inuit communities and their knowledge systems. It requires respectful engagement and must respond to community needs and priorities.
- Proposals involving Indigenous research should be identified to support review by experts with appropriate expertise and knowledge in Indigenous research.

CANADA FOUNDATION FOR INNOVATION

Application process

Two-stage application process



The forms in CAMS are accessible as of June 3, 2026



Institutional envelopes



At **NOI** submission

Institution can exceed its envelope by **up to 10%**.

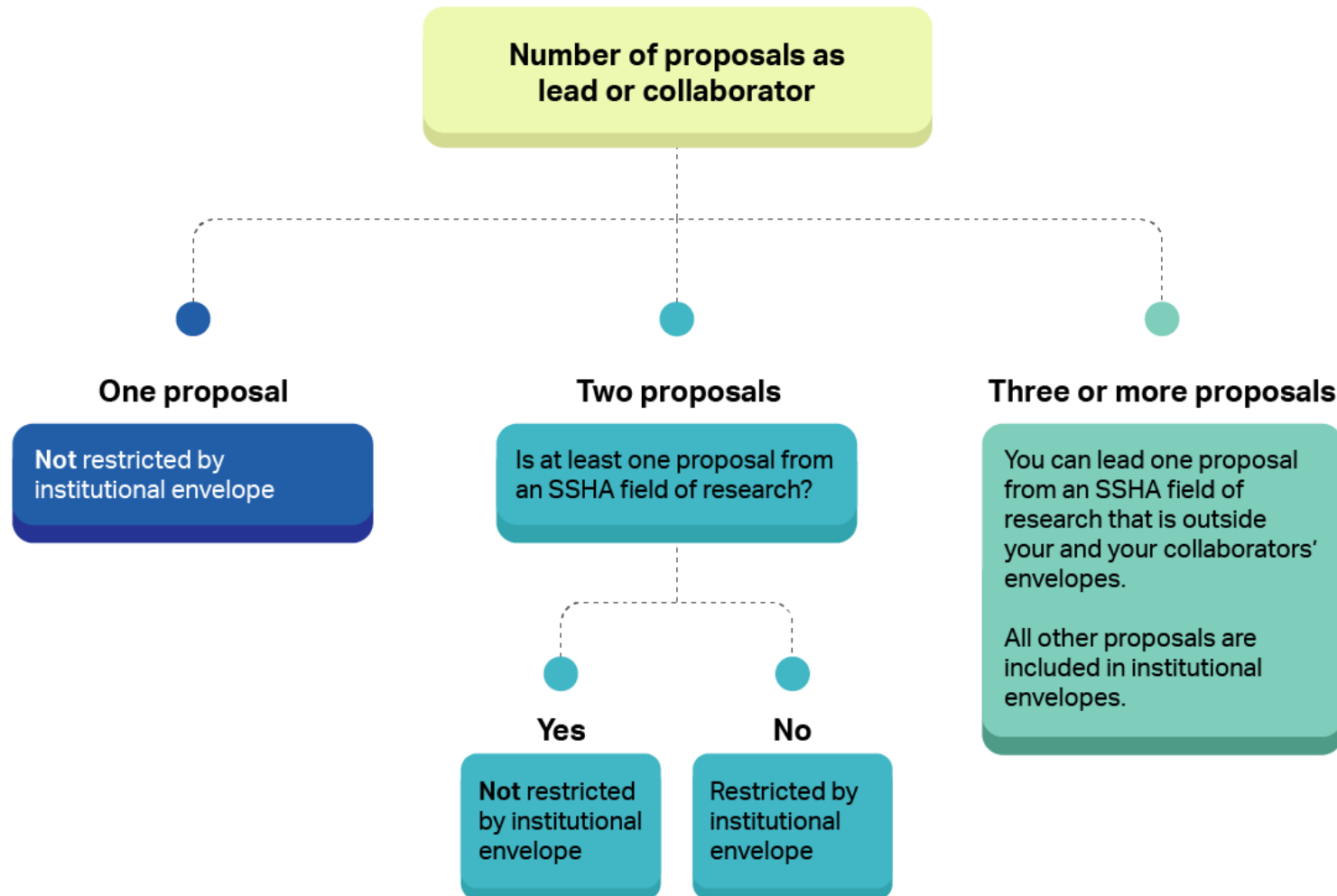


At **proposal** submission

Institution **must adhere** to its envelope.

- The minimum institutional envelope is \$4M.
- **Multi-institutional projects:** envelope contribution must be proportional to the value of the infrastructure it will house or to its scientific contribution to the project.

Envelope exemptions



Step 1: Notice of intent

SECTIONS


- Project information
- Collaborating institutions
- Project summary
- Team
- Project description
- Suggested reviewers (at least six)

NOTE:

- Collaborating with provincial and territorial funding partners
 - Work with funding partners as early as possible for alignment with priorities and review processes to expedite finalization
- Infrastructure located at national or international research facilities
 - Consult with the host facility to obtain approval and confirmation of commitment to house the infrastructure before submitting the NOI
- Advanced research computing infrastructure
 - Consult with the Digital Research Alliance of Canada

Step 2: Proposal

MODULES

- **Project** 
- Collaborating institutions
- Finance
- Suggested reviewers
- Research security

- Project information
- Plain language summary
- Project summary (PDF)
- Team
- Assessment criteria (PDF)
- Financial resources for operation and maintenance
- Project characteristics

Step 2: Proposal

Project characteristics

Does this proposal involve Indigenous research, i.e., research conducted by, grounded in or engaged with First Nations, Métis or Inuit communities, societies or individuals, and their wisdom, cultures, experiences or knowledge systems, as expressed in their dynamic forms, past and present? Yes No

Will any of the requested infrastructure be housed outside of Canada? Yes No

Are any team members from institutions outside of Canada? Yes No

Does this proposal involve partner organizations from outside of Canada? Yes No

Will any of the requested research infrastructure be integrated into an existing or new core facility (excluding National Research Facilities funded through the CFI's Major Science Initiatives Fund)?

Please select... ▼

What percentage of the total project cost corresponds to the requested research infrastructure to be integrated into the core facility? If none, enter "0."

%


Will any of the requested research infrastructure be integrated into a National Research Facility funded through the CFI's Major Science Initiatives Fund? Yes No

What percentage of the total project cost corresponds to the requested research infrastructure to be integrated into a National Research Facility funded through the CFI's Major Science Initiatives Fund? If none, enter "0."

%

Step 2: Proposal

MODULES

- **Project** 
- Collaborating institutions
- Finance
- Suggested reviewers
- Research security

- Project information
- Plain language summary
- Project summary (PDF)
- Team
- Assessment criteria (PDF)
- Financial resources for operation and maintenance
- Project characteristics



Page limits

- Page limits for the proposals submitted in English and French:
 - Total project costs \leq \$10M:
 - 25 pages in English
 - 30 pages in French
 - Total project costs $>$ \$10M:
 - 30 pages in English
 - 36 pages in French

Use of generative AI

- Institutions are ultimately accountable for the complete contents of their proposal.
- Privacy, confidentiality, data security and the protection of intellectual property must be prioritized in the development and review of proposals.
- Review and follow the [Guidance on the use of artificial intelligence in the development and review of research grant proposals.](#)



Objectives & assessment criteria

Objective 1

Strengthen researchers' ability to excel and compete internationally

- Research
- Team

Objective 2

Build sustainable research capacity

- Infrastructure
- Sustainability

Objective 3

Generate relevant and impactful benefits for Canadians

- Benefits





Important considerations

Research

- Equity, diversity and inclusion in research design

Team

- Diverse research outputs ([DORA](#))
- Inclusive work environment

Sustainability

- Responsible and ethical data management

Benefits

- A range of positive impacts for Canadians across health, environment, socio-cultural, and economic areas (e.g., diagnostics, conservation, well-being, sustainable jobs)
- Turning research outputs into outcomes and impacts
- Highly qualified personnel: number trained, skills acquired, enhanced training environment and career outcomes

Assessment criteria and sub-criteria

1 - Research: The research program is innovative, feasible and internationally competitive.

- Details of the research program, its innovative aspects and breakthrough potential [as well as its significant contribution to knowledge]. Position the program within the national and international context. Include benchmarks and references.
- The approach, methodology and key challenges as well as how the team will overcome them.
- How principles of equity, diversity and inclusion have been considered and applied to the design of the research program. Where EDI considerations are not applicable, explain why

2 - Team: The team members and their partners have all the experience and expertise to conduct the proposed activities and will do so in an inclusive work environment.

- How the team members' experience, expertise and roles meet the needs of the research program. Include a competency matrix.
- How collaborators, partners and communities are meaningfully engaged to support the research program.
- Evidence-based, specific and concrete actions to nurture a work environment that enables full participation of individuals from underrepresented groups and early-career researchers

Assessment criteria and sub-criteria

3 - Infrastructure: The requested infrastructure is necessary and appropriate to conduct the research program.

- Each requested item and a justification of its need. Include a table matching infrastructure to proposed activities and methodologies.
- How the requested infrastructure complements the existing infrastructure at the institution and at partner institutions.

4 - Sustainability: The infrastructure will be well managed, appropriately used and financially sustainable to ensure reliable long-term operation.

- How the infrastructure will be managed, operated and maintained.
- How the infrastructure will be appropriately used. Include information about user access policies and the current and expected levels of use.
- Plans for responsible and ethical data management.
- Plans for financial sustainability with details about operating and maintenance costs and revenue sources.

Assessment criteria and sub-criteria

5 - Benefits: The project will generate relevant and impactful benefits for Canadians. The team members and their partners have defined pathways for real-world uptake through knowledge mobilization, technology transfer and end user engagement.

- Relevant benefits and their real-world impact for Canadians.
- Plans for knowledge mobilization, [cultural dissemination], technology transfer and engagement with partners and end users (e.g., collaboration with communities, clinicians, [policymakers] and the public or private sector).
- Training of highly qualified personnel.

Assessment criteria and sub-criteria

1 - Research: The facility enables innovative, feasible and internationally competitive research.

- At a high level, describe the core facility and the types of projects and services the infrastructure will enable.
- Innovative aspects and breakthrough potential of a representative sample of projects. Position the core facility and the projects within the national and international context. Include benchmarks and references.
- The breadth and diversity of the core facility's users. Describe the current or planned user base including the number of internal and external users, their geographic distribution (by region/province and country) and sector (academia, communities, public or private sector).

2 - Team: The team has all the experience and expertise needed to enable multiple research activities and will do so in an inclusive work environment.

- How the team members' experience, expertise and roles enable multiple research activities. Include a competency matrix.
- Evidence-based, specific and concrete actions to nurture a work environment that enables full participation of individuals from underrepresented groups and early-career researchers.

Assessment criteria and sub-criteria

3 - Infrastructure: The requested infrastructure is necessary, appropriate and will enhance the facility's services.

- Each requested item and a justification of its need. Include a table matching infrastructure to proposed activities and methodologies.
- How the requested infrastructure integrates with the existing infrastructure and fits within the mission of the facility.
- The role in operating, maintaining or managing the facility of any personnel for whom funding is being requested. Provide a table that includes the job title, role, estimated annual salary and duration of employment using this funding.

4 - Sustainability: The infrastructure will be well managed, optimally used and financially sustainable to ensure reliable long-term operation.

- How the facility will be managed, operated and maintained.
- How the infrastructure will be optimally used. Include information about user access policies and the current and expected levels of use.
- Plans for responsible and ethical data management.
- Plans for financial sustainability with details about operating and maintenance costs and revenue sources. Distinguish between personnel costs described in the "infrastructure" section and personnel costs supported by other sources (e.g., institutional support, user fees).

Assessment criteria and sub-criteria

5 - Benefits: The facility and the projects it enables will generate relevant and impactful benefits for Canadians. The team members and their partners have defined pathways for real-world uptake through knowledge mobilization, technology transfer and end user engagement.

- Relevant benefits and their real-world impact for Canadians.
- Plans for knowledge mobilization, technology transfer and engagement with partners and end users (e.g., collaboration with communities, clinicians and the public or private sector).
- Training of highly qualified personnel.

Step 2: Proposal


MODULES

- Project
- Collaborating institutions
- **Finance** 
- Suggested reviewers
- Research security

- Cost of individual items
- Construction or renovation floor plans (PDF), if applicable
- Contributions from eligible partners
- Infrastructure utilization
- Overview of infrastructure project funding (generated automatically)

Step 2: Proposal

MODULES

- Project
- Collaborating institutions
- Finance
- Suggested reviewers
- **Research security** 

- Necessary documents in the research security module
 - STRAC attestation forms,
 - Risk assessment forms,
 - Private-sector partner identification forms
- [See our website](#)

CANADA FOUNDATION FOR INNOVATION

Review process

Review process stages

March - July 2027



.....
Assess the strengths and weaknesses of proposals against the assessment criteria



September 2027



.....
Assess proposals against the three competition objectives



October 2027



.....
Recommends to the Board proposals that best meet the CFI's mandate and competition objectives and would be the most beneficial portfolio of investments for Canada



November 2027



.....
Makes final funding decision



Rating scale

4+

Exceeds the
criterion standard/
objective

4

Satisfies the
criterion standard/
objective in
all aspects

3

Satisfies the
criterion standard/
objective with
minor weaknesses

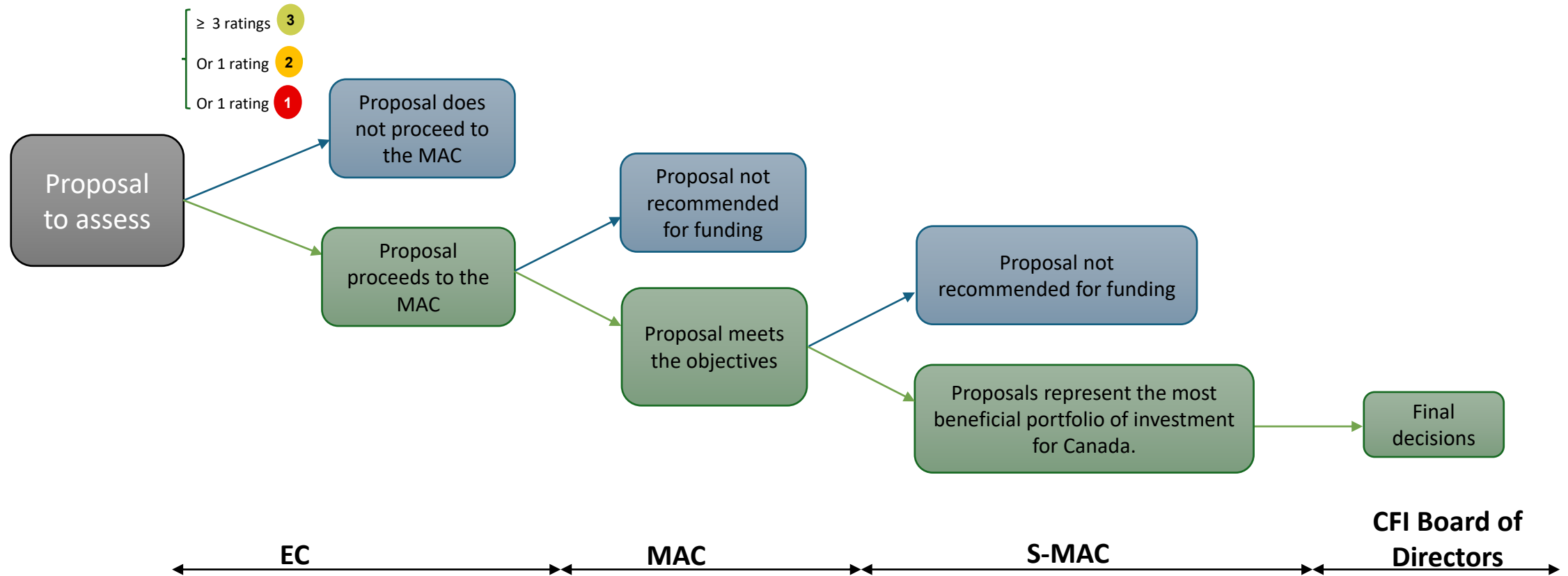
2

Partially satisfies
the criterion
standard/objective

1

Does not satisfy
the criterion
standard/objective

Minimum threshold



Tools & resources

CAMS

- Liaison contact information list
- Automatic CAMS notification for collaborating institutions
- Report repository:
 - Envelope management
 - Team member tracking

Other resources

- [Innovation.ca](#)
 - [2025 IF analysis of strengths and weaknesses](#)
 - [Policy and program guide](#)
 - [Using CAMS](#)
- [DORA's website](#)
- [Incorporating Indigenous Knowledge](#)
- [CIHR EDI Resources](#)

CANADA FOUNDATION FOR INNOVATION

Questions?

Reach out to us at:
innovation.fund@innovation.ca